

DEEP SPACE

On your way to Mars, there's time to make a stop at Moon Base Alpha. The ship can fill up with fuel, and you can explore...

Just like on Earth, people will travel to and from the Moon's surface using a space elevator.

This ship uses hydrogen gas as fuel. It's mined and pumped up from the Moon.

This pod carries passengers between the elevator and the ship.

Nobody lives on the Moon, but there are plenty of people here.

This part of the Moon ALWAYS faces the Sun, so these solar panels provide a constant source of power.

Visitors can enjoy all sorts of facilities: lift the flap to take a closer look.

Here's a launching rail, for small shuttles taking short trips – to Earth or nearby space stations.

Robots explore the Moon's surface, hunting for ice to mine.

Humans will never run out of places in space to explore. This is a deep space probe, bound for a star known as Wolf 1061.

Lift the flaps to unfurl this solar sail and see how it works.

The star Wolf 1061 is one of the closest to Earth – but the journey will take hundreds of years.

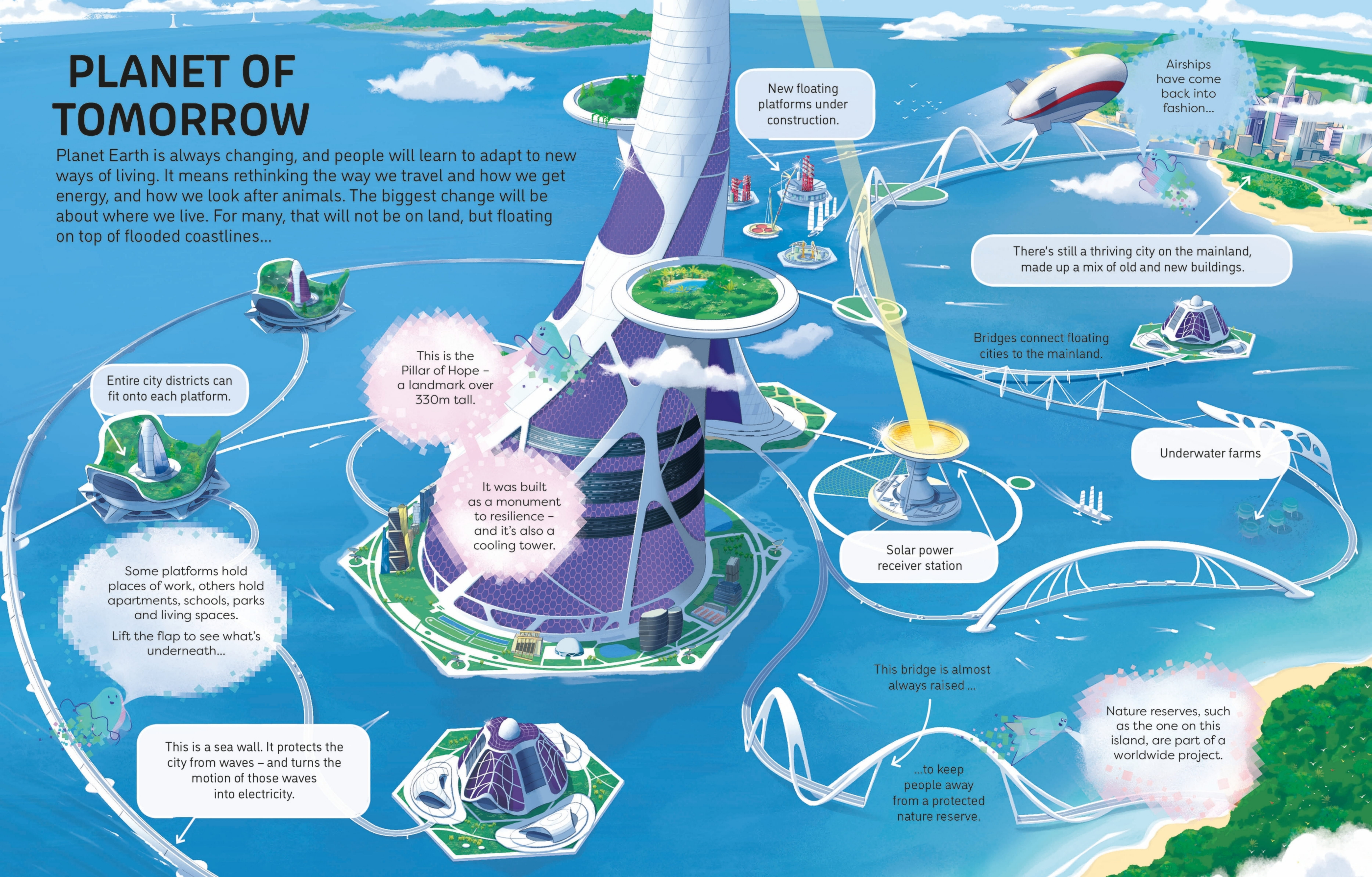
Psst, wanna meet some aliens?

The journey to Mars takes several months...
...but passengers think it's well worth it...
...to visit the growing Martian colony.

People live here, on the ship's ring.

PLANET OF TOMORROW

Planet Earth is always changing, and people will learn to adapt to new ways of living. It means rethinking the way we travel and how we get energy, and how we look after animals. The biggest change will be about where we live. For many, that will not be on land, but floating on top of flooded coastlines...



New floating platforms under construction.

Airships have come back into fashion...

There's still a thriving city on the mainland, made up a mix of old and new buildings.

Bridges connect floating cities to the mainland.

Underwater farms

Solar power receiver station

This bridge is almost always raised ...

...to keep people away from a protected nature reserve.

Nature reserves, such as the one on this island, are part of a worldwide project.

This is the Pillar of Hope – a landmark over 330m tall.

It was built as a monument to resilience – and it's also a cooling tower.

Entire city districts can fit onto each platform.

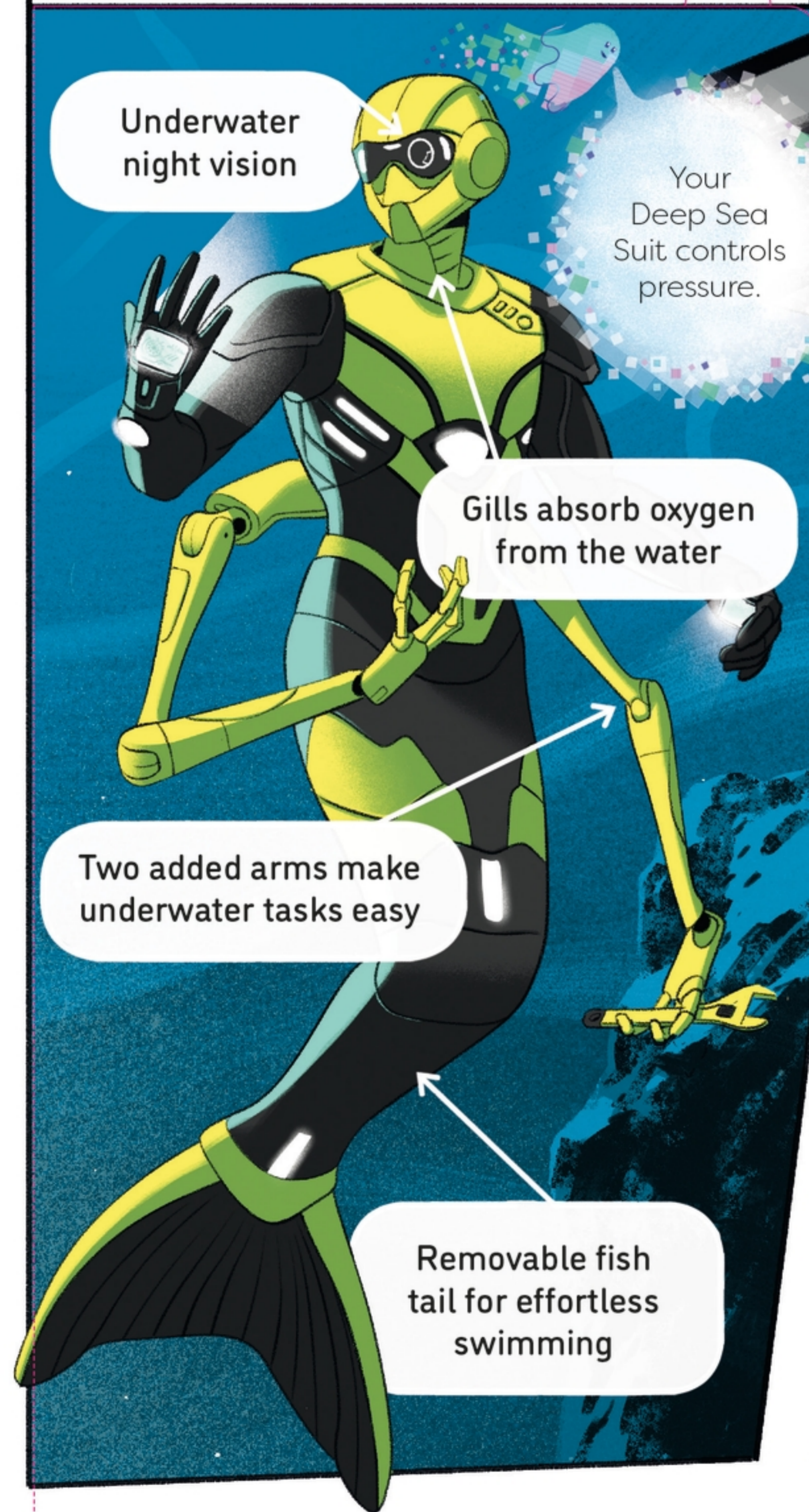
Some platforms hold places of work, others hold apartments, schools, parks and living spaces.
Lift the flap to see what's underneath...

This is a sea wall. It protects the city from waves – and turns the motion of those waves into electricity.

BUILDING BETTER BODIES

What do you want to be when you grow up? In the future, you could improve your body so you excel at the job you choose. Lift the flaps to find out how you might use these new superpowers.

DEEP SEA DIVER



EMERGENCY RESPONDER

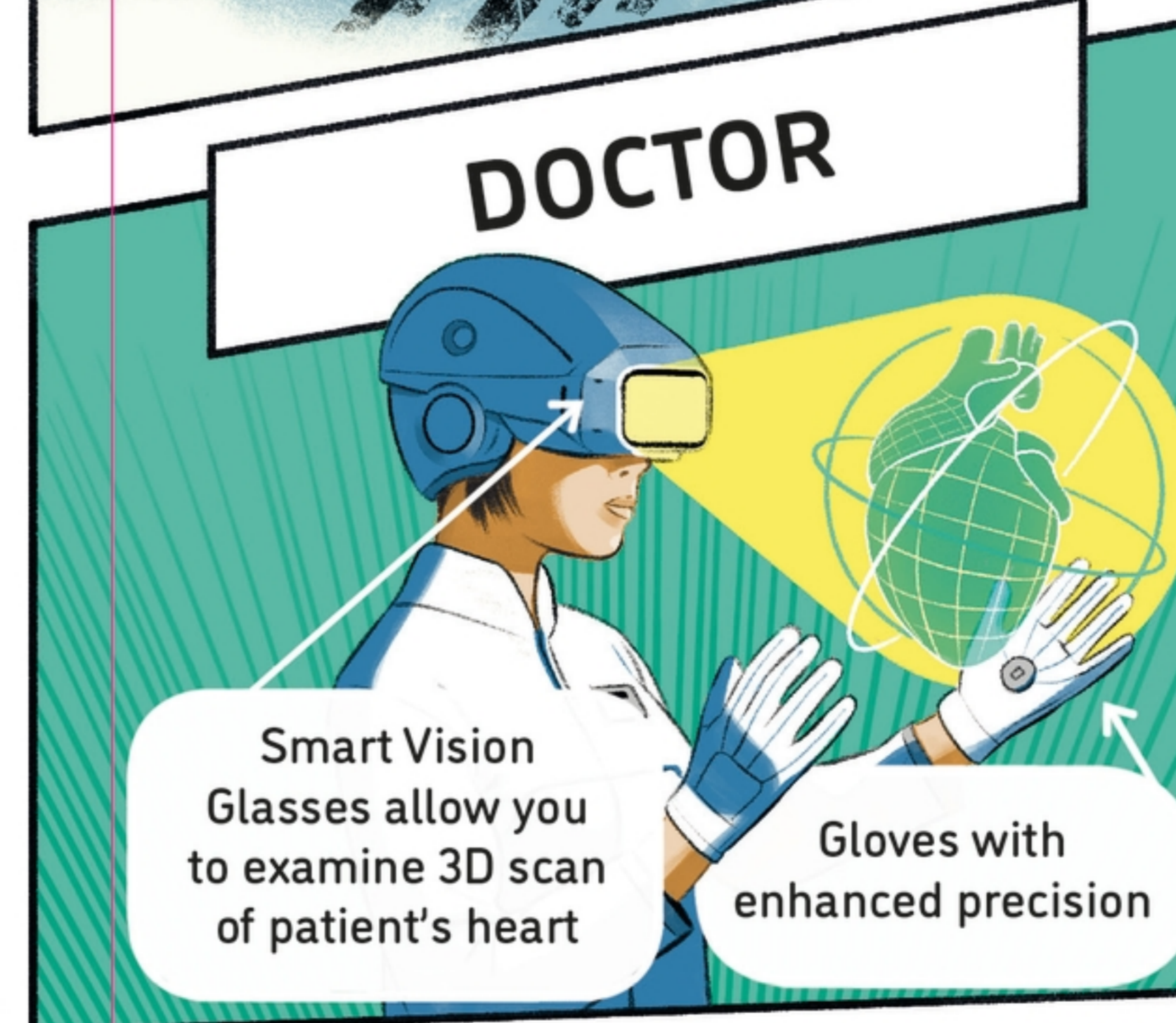


Having MY help gives you the superpower of wisdom. I know all the things humans have ever known, and more...

MOUNTAIN RESCUE



DOCTOR



CRIME FIGHTER

