

Meet the Magic Dolls

Holly, Lily and Grace are the 'Magic Dolls'. They care for the magical creatures, from unicorns to fairies and pixies, that live on the Enchanted Isle.

Holly

has a special relationship with the trees and woodland creatures in the Spellwood. She also loves the mermaids that live by the Sparkling Shore.



Use the stickers to dress the Dolls

Lily

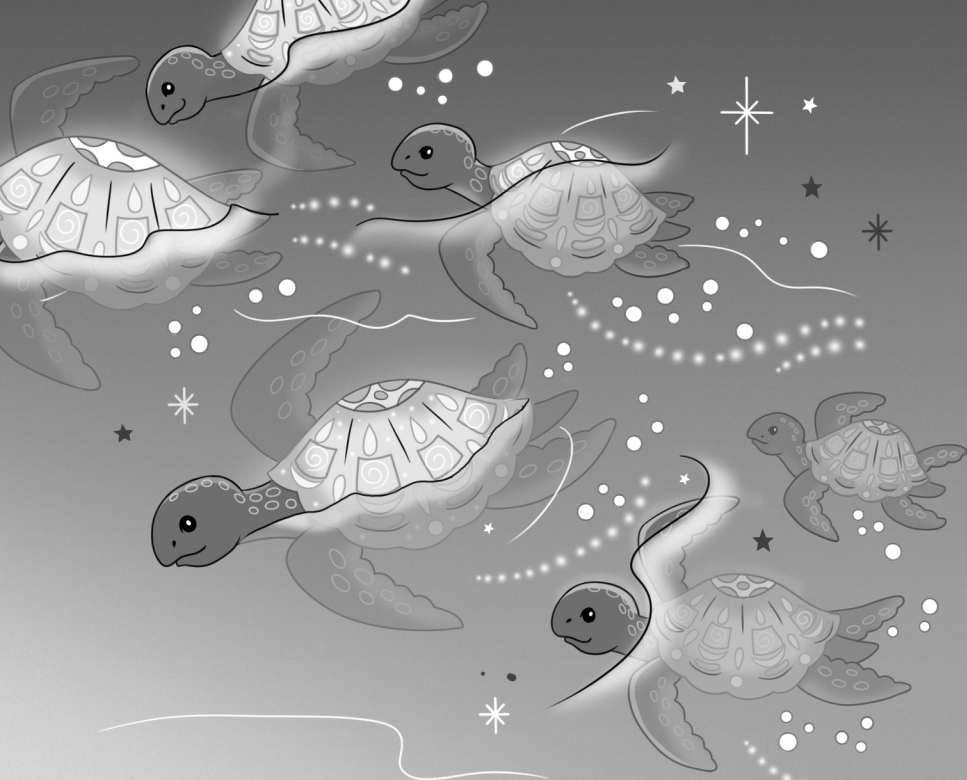
has a passion for flowers and fairies. She is brilliant at healing magical creatures with her herbs and flower potions.



Grace

is fascinated by all magical creatures. She reads books on how to care for them and spends as much time as she can on the Enchanted Isle.





The Dolls watched as turtle after turtle swam past them, their flippers gracefully cutting through the water, their dark eyes now full of hope.



The Dolls followed, glancing from side to side in case the Sea Serpent should appear.

“Maybe she’s given up and gone away?” said Holly.

But before the Dolls reached the shore, they caught their first glimpse of her – a huge, shadowy shape gliding through the water. She was longer than all three of them put together, with glinting eyes and a body as wide and strong as a tree trunk.



Worst of all they realized, too late, that she was heading straight for them...