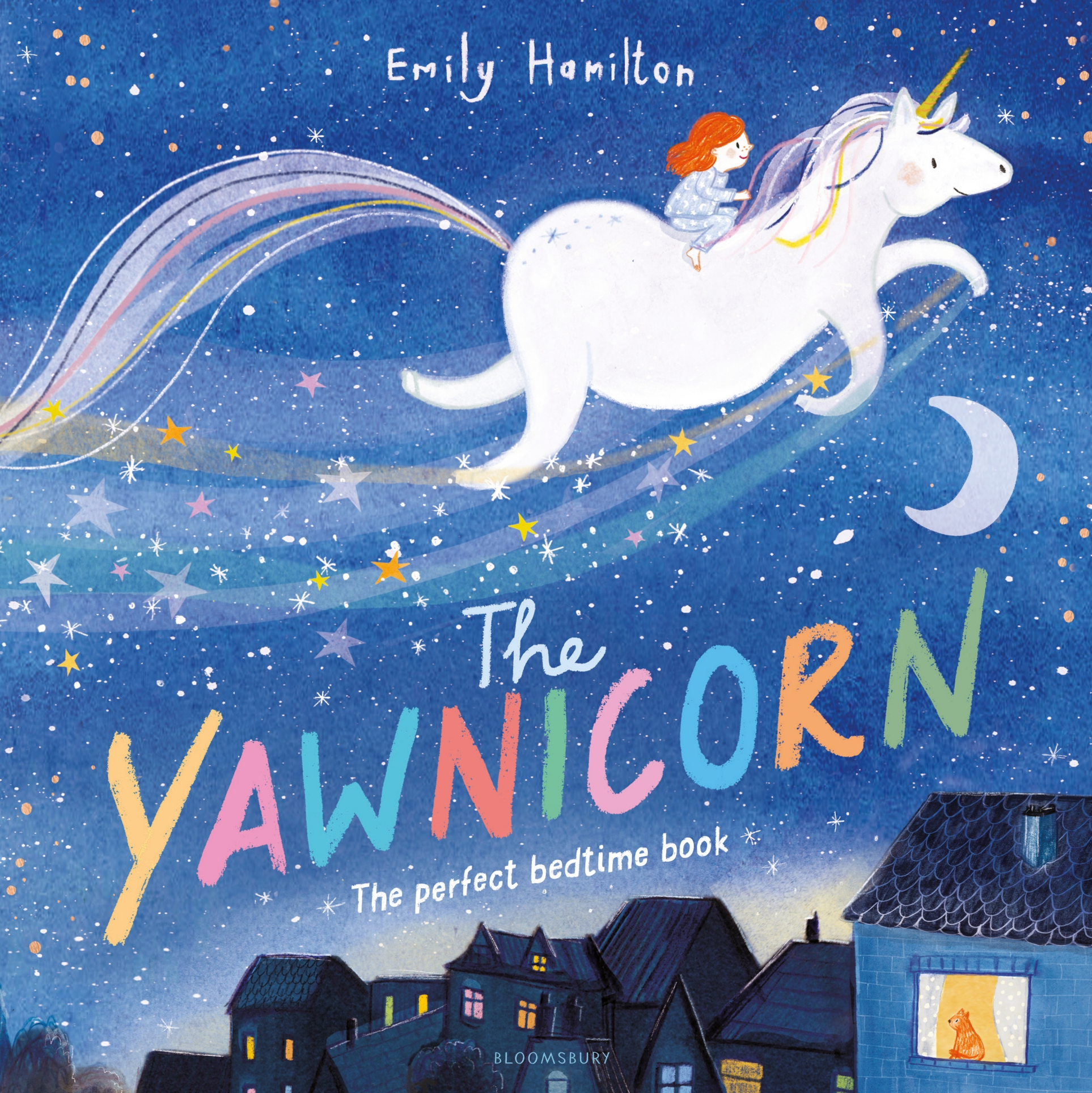


Emily Hamilton



The  
**YAWNICORN**

The perfect bedtime book

BLOOMSBURY



The  
**YAWNICORN**



For Josh, inventor of brilliant book names  
and Sunny & Jojo, for always being magical



With special thanks to Hannah, Pari & Goldy

BLOOMSBURY CHILDREN'S BOOKS  
Bloomsbury Publishing Plc  
50 Bedford Square, London WC1B 3DP, UK  
29 Earlsfort Terrace, Dublin 2, Ireland

BLOOMSBURY, BLOOMSBURY CHILDREN'S BOOKS and the Diana logo are trademarks of Bloomsbury Publishing Plc

First published in Great Britain in 2023 by Bloomsbury Publishing Plc

Text and illustrations copyright © Emily Hamilton 2023

Emily Hamilton has asserted her rights under the Copyright, Designs and Patents Act, 1988, to be identified as the Author and Illustrator of this work

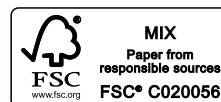
All rights reserved. No part of this publication may be reproduced or transmitted in any form or by any means, electronic or mechanical, including photocopying, recording, or any information storage or retrieval system, without prior permission in writing from the publishers

A catalogue record for this book is available from the British Library

ISBN HB: 978 1 5266 4903 4  
ISBN PB: 978 1 5266 4902 7  
ISBN eBook: 978 1 5266 4904 1

1 3 5 7 9 10 8 6 4 2

Printed and bound in China by Leo Paper Products, Heshan, Guangdong



To find out more about our authors and books visit [www.bloomsbury.com](http://www.bloomsbury.com) and sign up for our newsletters

# The YAWNICORN



Written and illustrated by

Emily Hamilton

BLOOMSBURY  
CHILDREN'S BOOKS  
LONDON OXFORD NEW YORK NEW DELHI SYDNEY



It's bedtime . . .

you're snuggly and tucked up all tight.

Your pillows are soft and you've  
turned out the light.



Your feet are all cosy,

you've counted some sheep,

but for some funny reason, you . . .



JUST. CANNOT. SLEEP!



Your head is all busy,  
your legs are all twitchy,  
your brain won't stop buzzing,  
your duvet is itchy.

But there's someone to help you drift off until dawn.  
It's high time you called on . . .





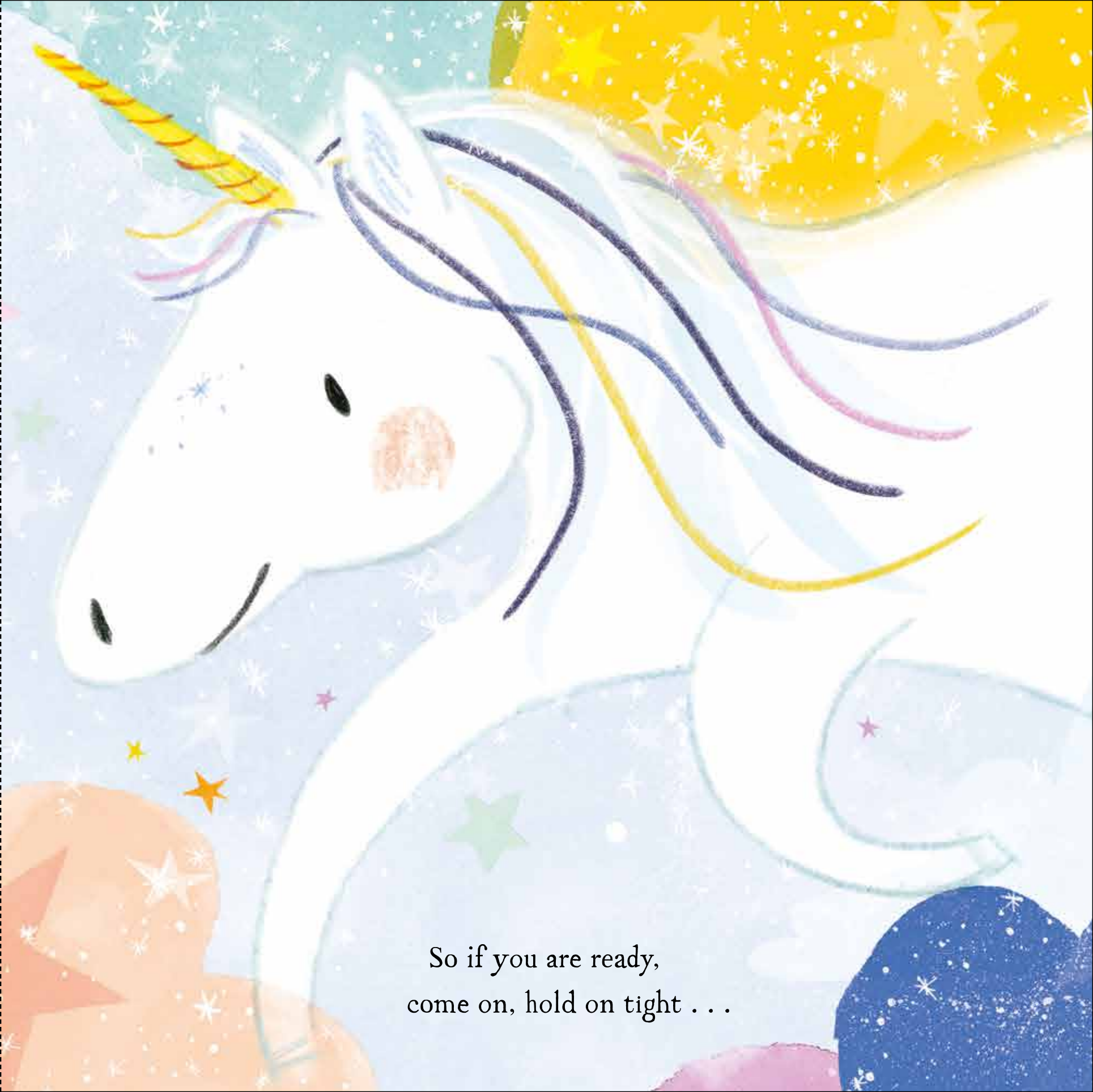
...the Yawnicorn!



His job is to help when you simply can't sleep,  
and are still wide awake in your bed counting sheep.




He's made up of starshine and magic and light –  
he'll help find a dreamland  
for you that's just right!



So if you are ready,  
come on, hold on tight . . .





*Up, up and away – and into the night!*

Over the rooftops and houses below,  
the magic is waiting . . .

So where will you go?