

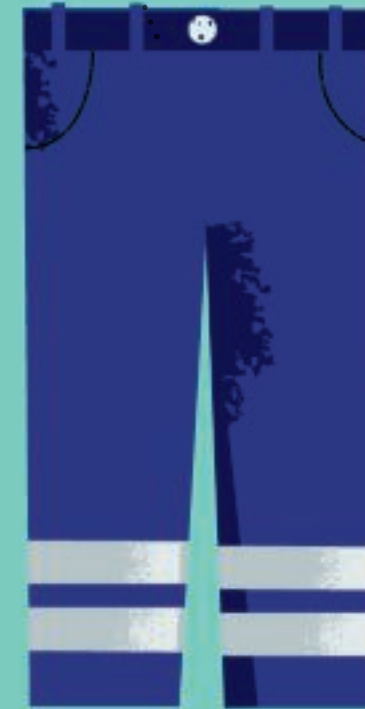
Today your job is to drive the bin lorry through town to collect the recycling and take it to be sorted.

Here is your team of rubbish collectors.



Before you start work, you need to put on your safety gear. What do you need to wear?

High-visibility trousers



High-visibility vest



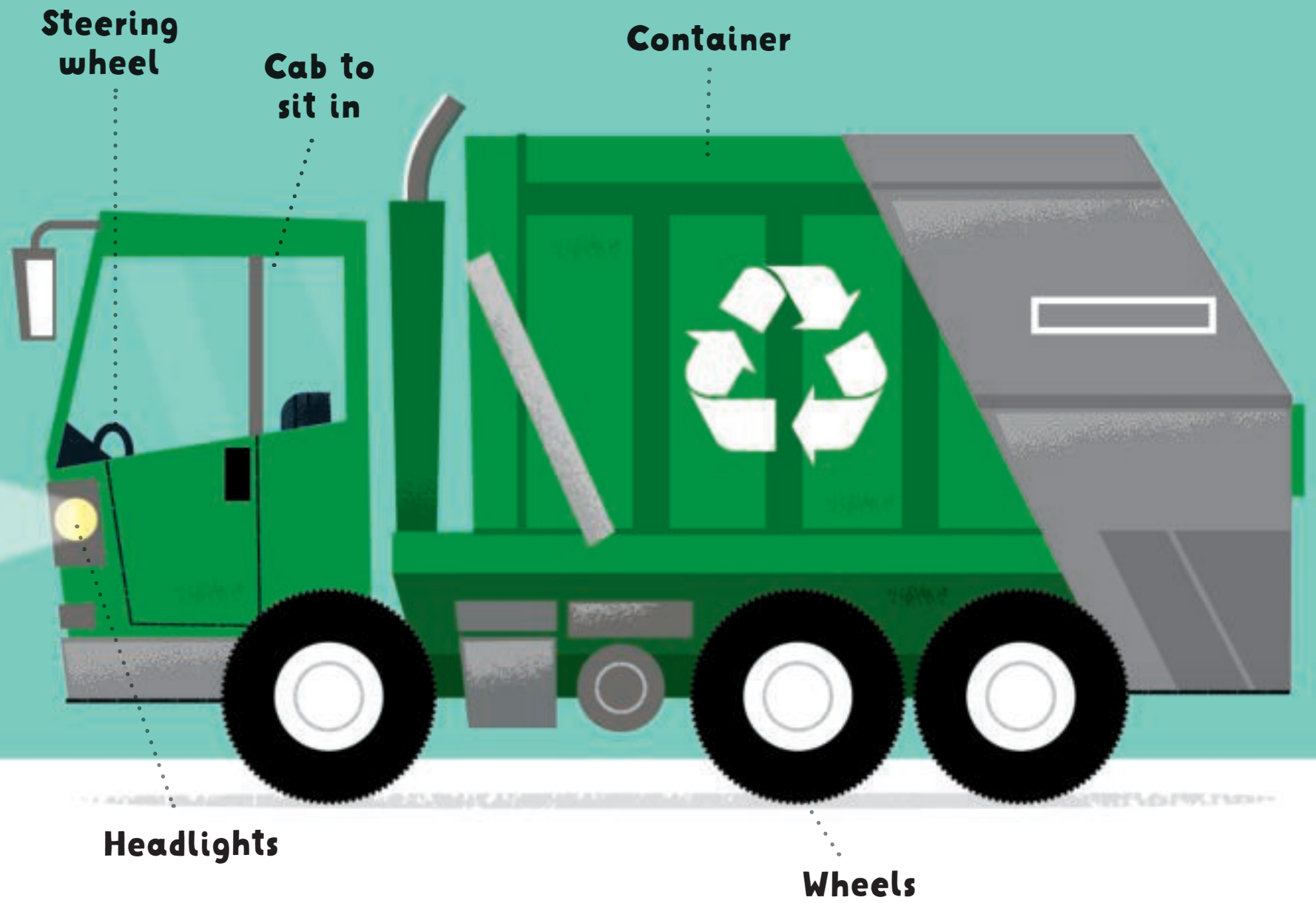
Safety boots



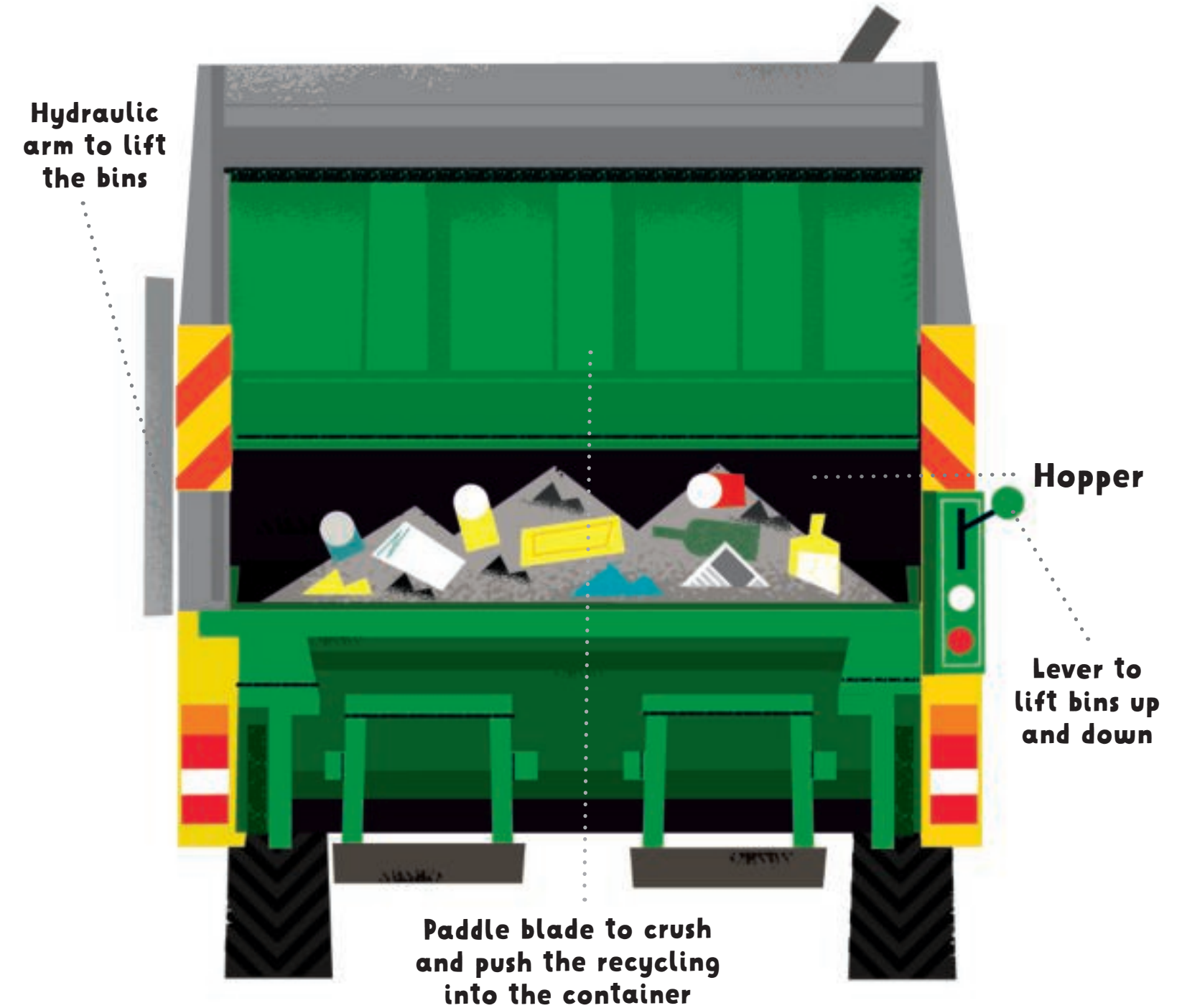
Gloves



**This is your bin lorry!
Can you name all the parts?**



**The contents of every recycling bin is emptied into
the hopper at the back of the bin lorry.**



It's early in the morning and your day has begun.
Get into the cab and put on your seatbelt.

It's still dark outside. Push the yellow
switch to turn on your headlights.
Beep your horn and count the rubbish
collectors as they get ready.



Computer screen

Press the red button to start your engine

BEEP BEEP!

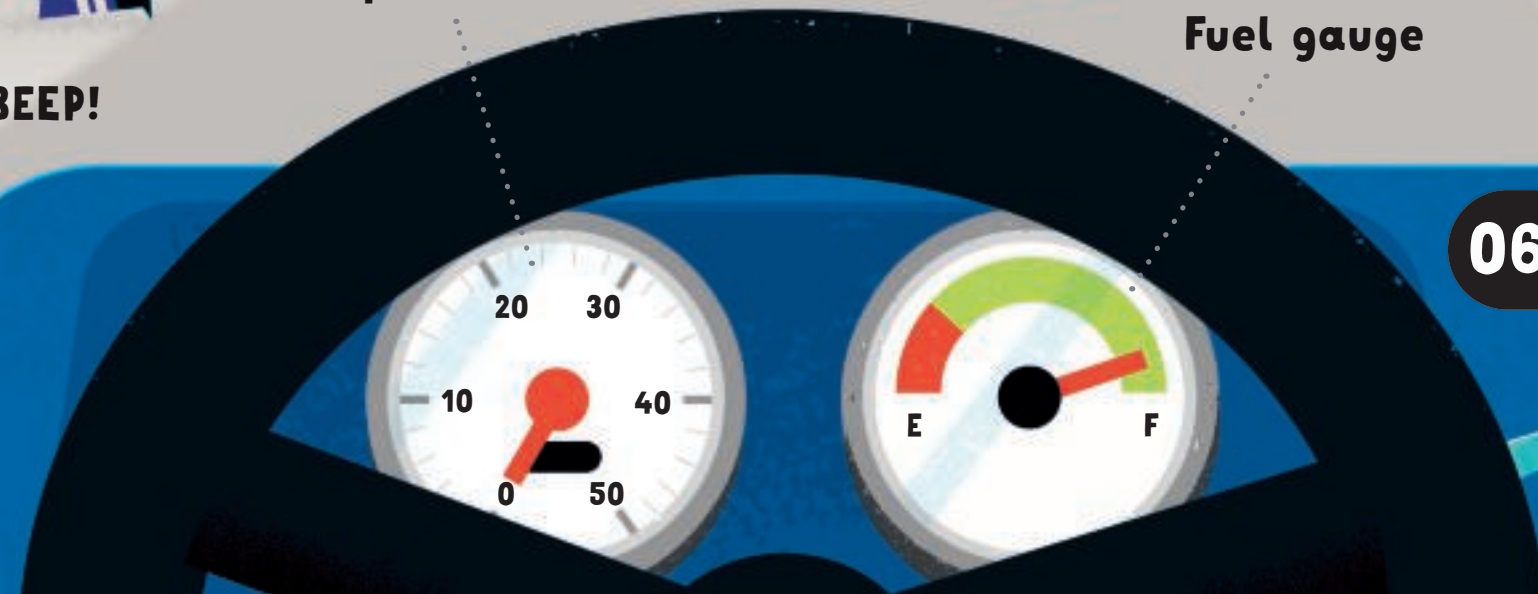
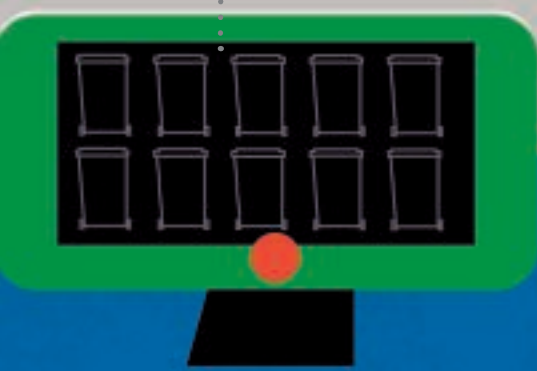
Speed dial

Fuel gauge

Indicator

Lever

Sat-nav



06:30



1 2 3 4 5

