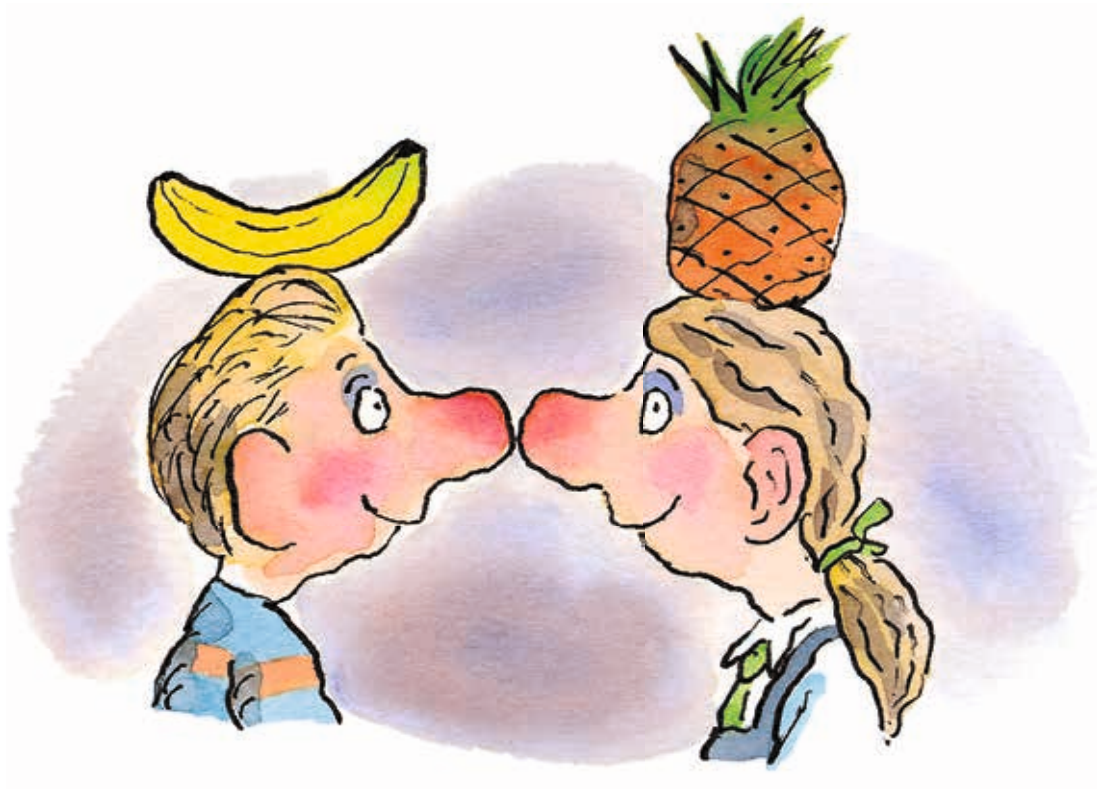


# Dr Xargle's

## Book of Earth Families



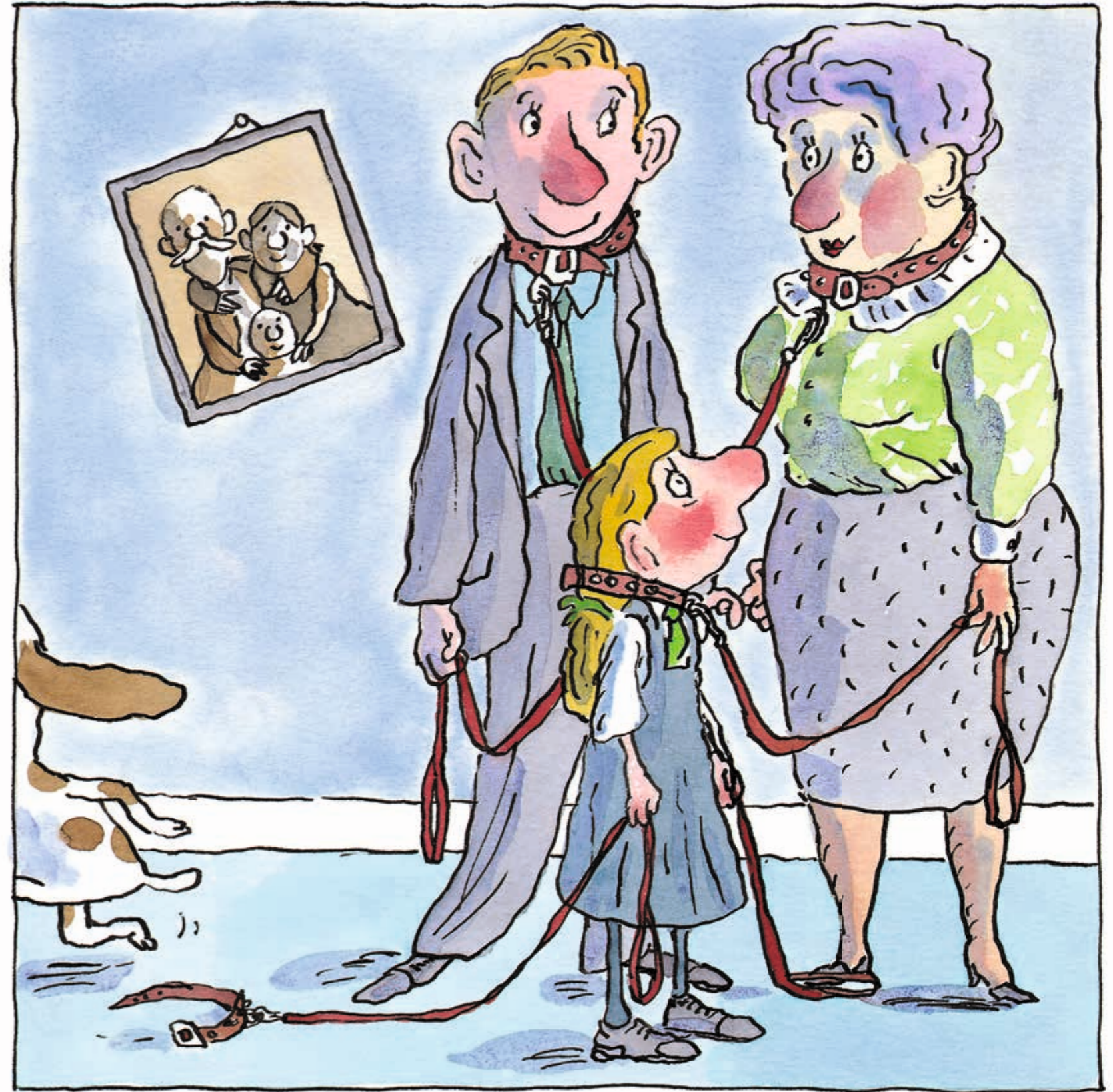
Translated into Human by  
**JEANNE WILLIS**

Pictures by  
**TONY ROSS**

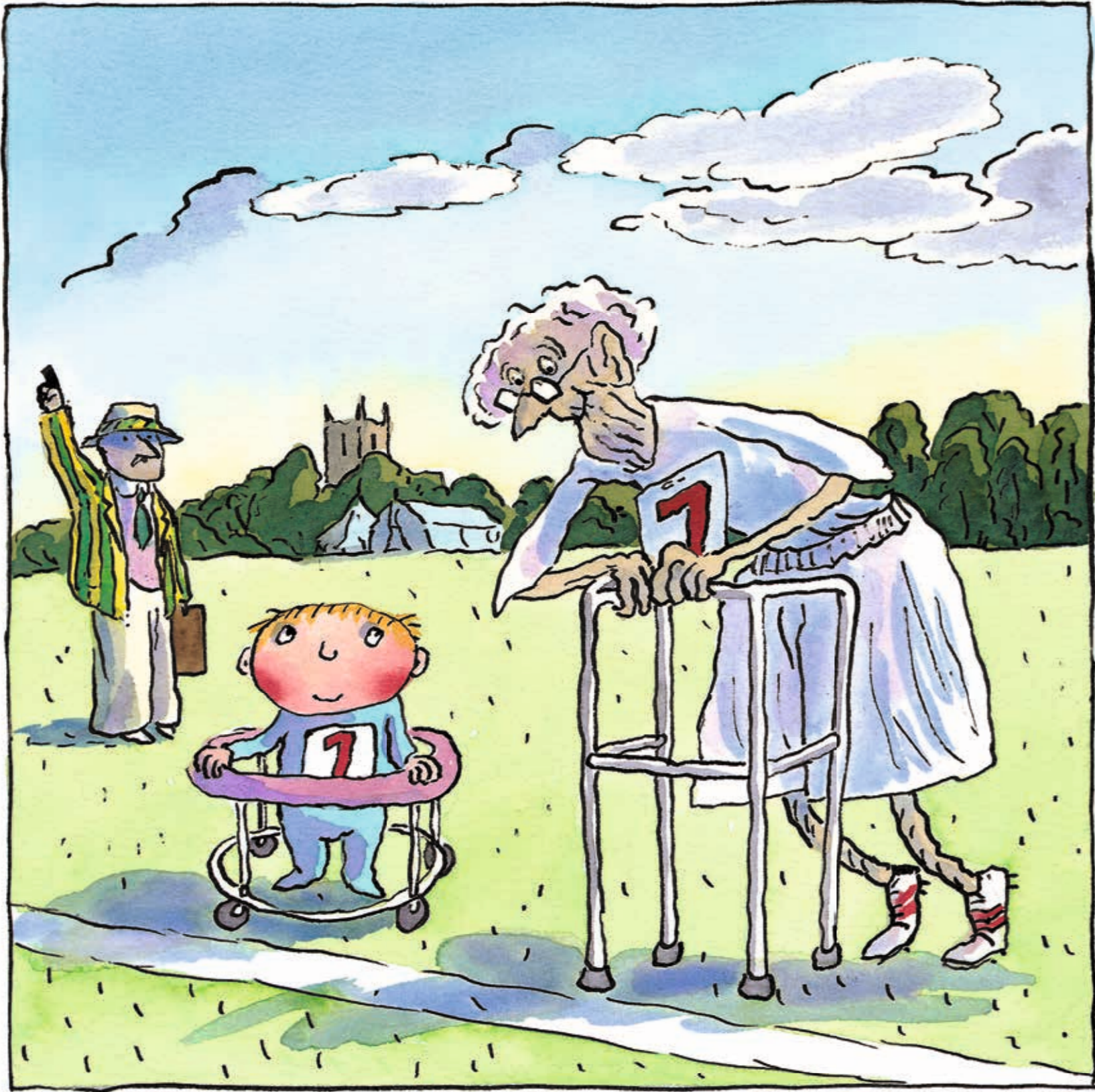
Andersen Press



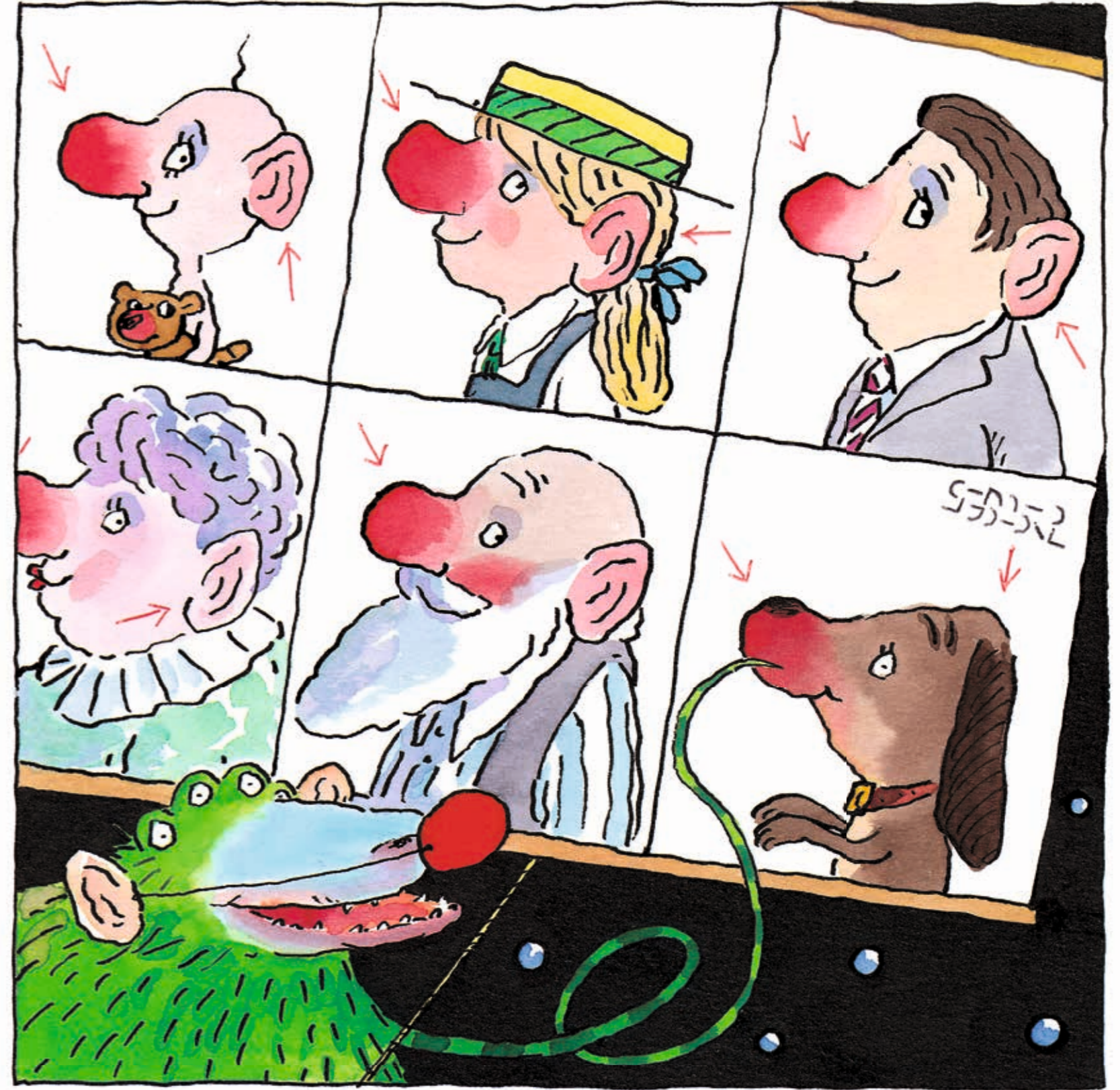
Good morning, class.  
Today we are going to learn about Earth Family.



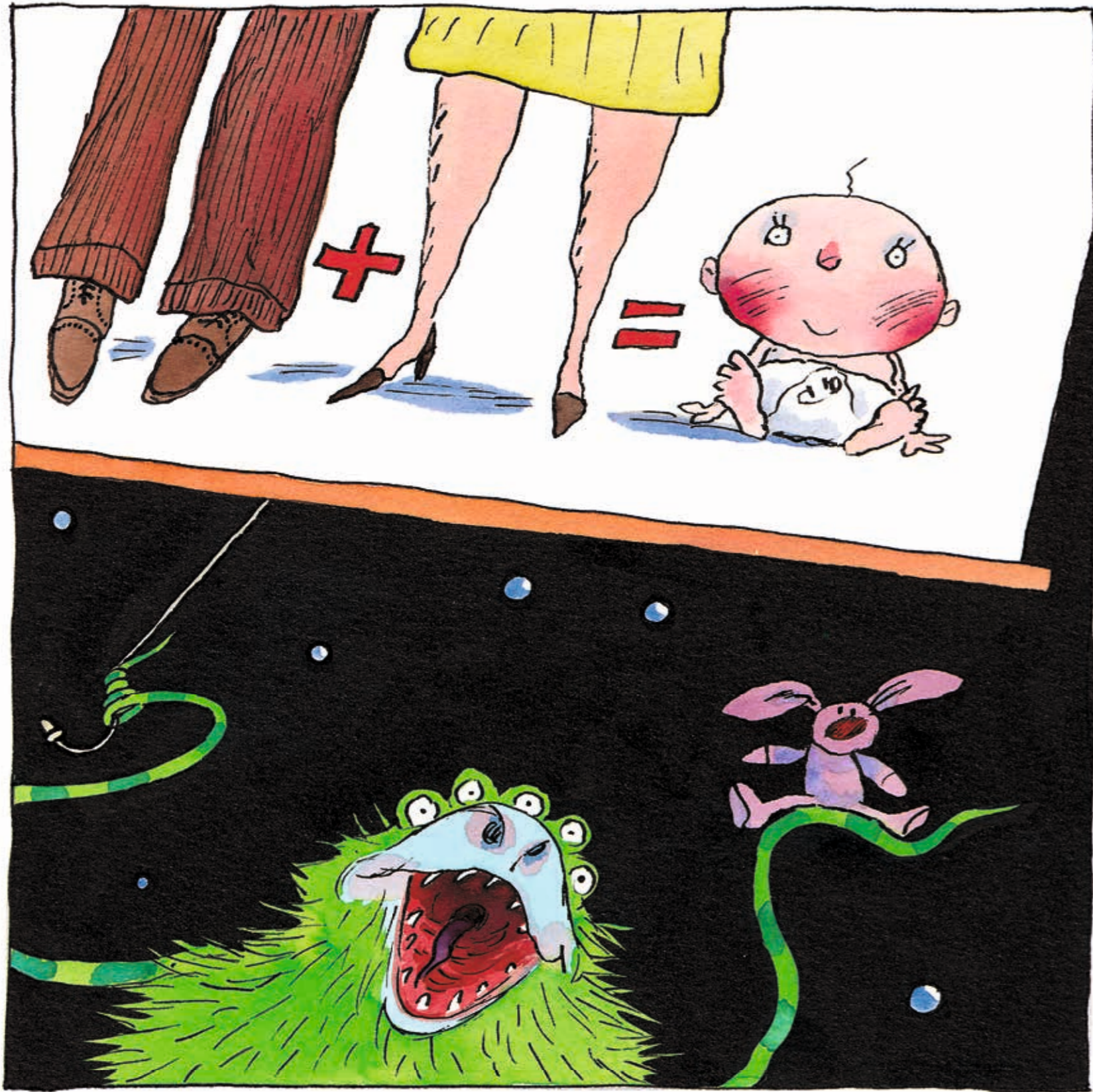
An Earth Family is a collection of Earthlings who  
belong to each other whether they like it or not.



They are many different ages from brand new to antique.



They have identical earflaps and hooter shapes.



A family begins with a mummy Earthling and daddy Earthling and one Earthlet.



The number of relatives in an Earth Family is always larger than the number of chairs at Christmas time.