

ICE CREAM



Let's start with ice cream! What shapes and lines do you think we'll need?

1



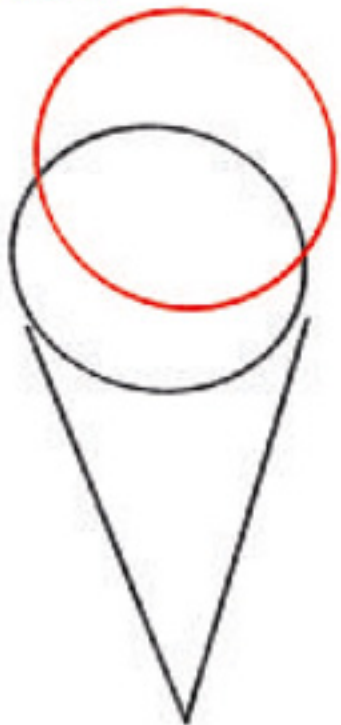
Draw lines to make the bottom of the cone.

2



Lightly draw a circle on top.

3



Two scoops? Why not! Add another circle on top of the first.

4



Now draw the scoops fully, following the shapes of the circles.

TIP!

Add wavy lines to show how they squash down.

5



Draw a pattern on the cone.

6 And add some toppings! You could draw wavy lines for sauce dripping down, a stick of chocolate, or tiny shapes for sweets and nuts.



Draw yours here!

CHARACTERS - CLOTHES

What else do you think adds character to people? How about clothes?

QUEEN

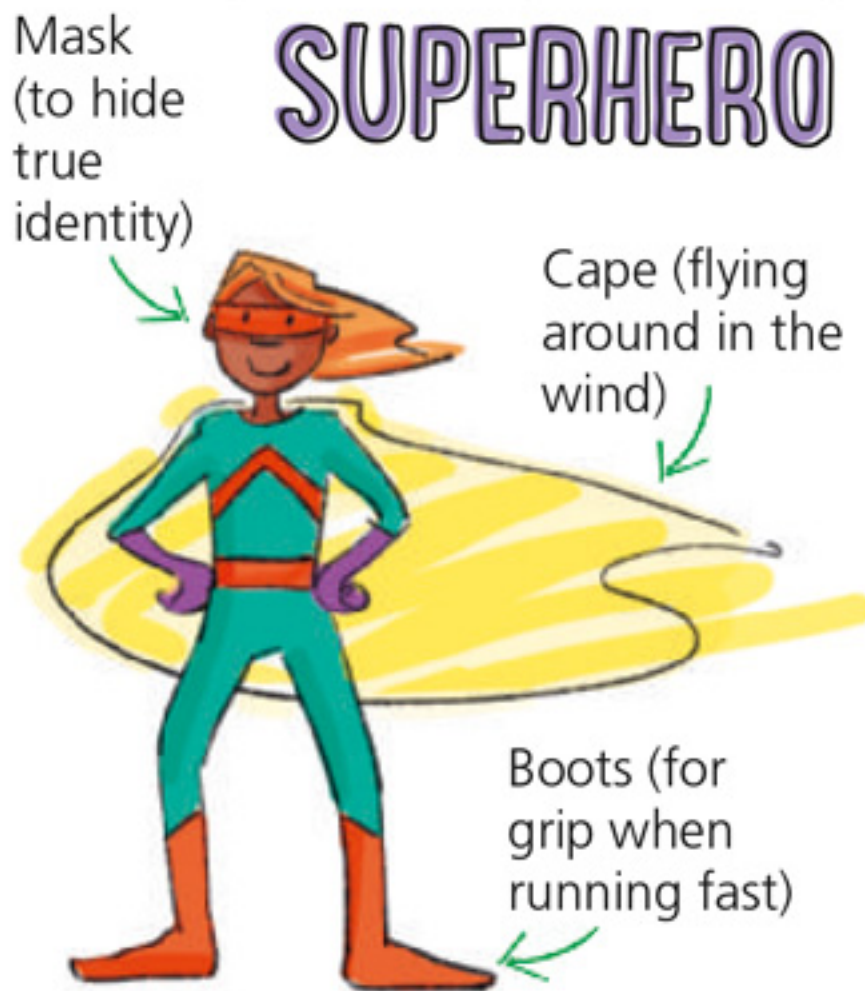


Crown (with lots of precious jewels)

Robe (to show how important and powerful she is)

Pretty decorated gown

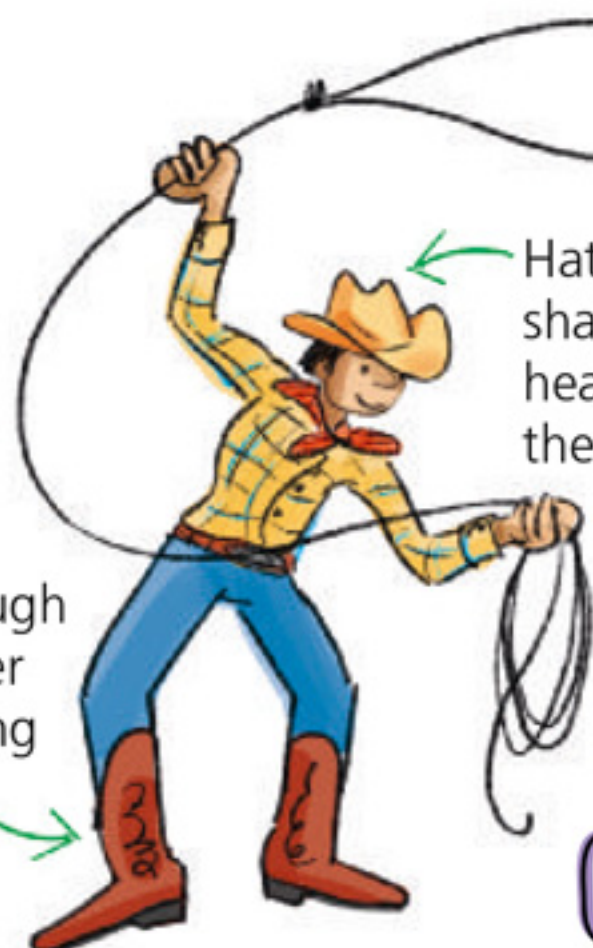
SUPERHERO



Mask (to hide true identity)

Cape (flying around in the wind)

Boots (for grip when running fast)



Lasso (to herd cattle)

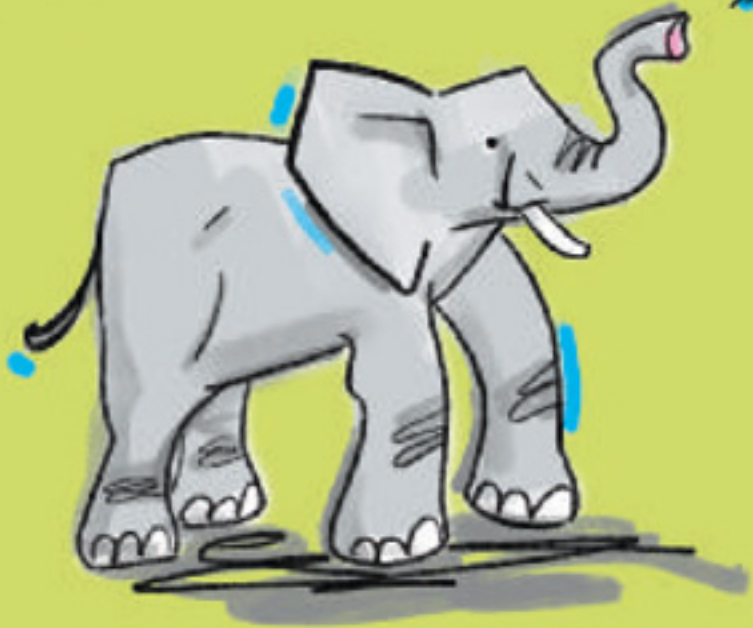
Hat (to shade the head from the sun)

Boots (for tough weather and long rides)

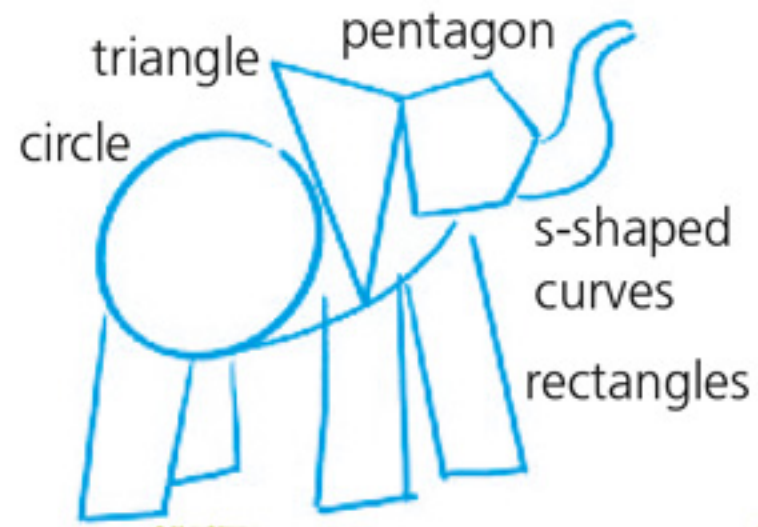
COWBOY

Draw your own character here.
What are they wearing?

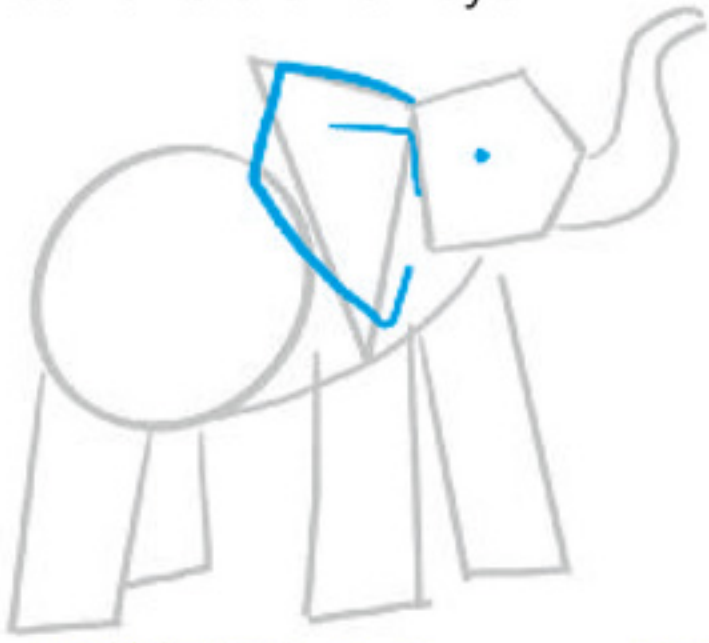
ELEPHANT



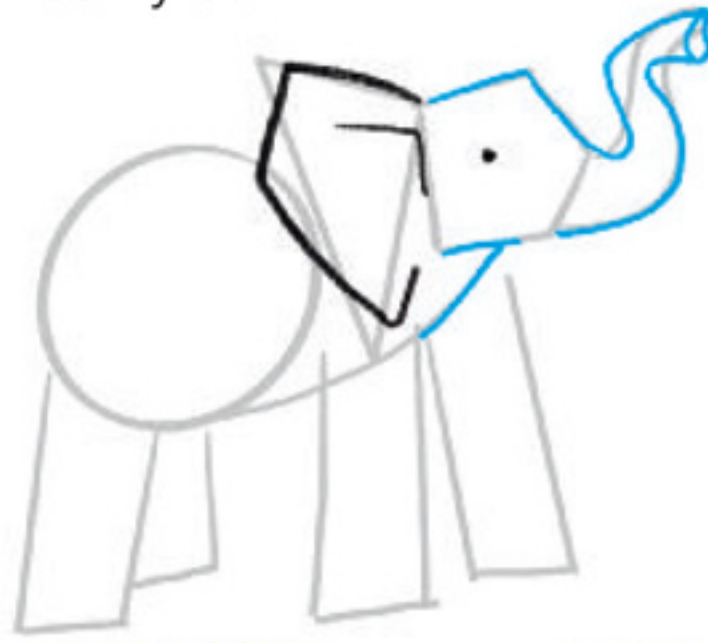
There are lots of shapes and lines that make up an elephant.



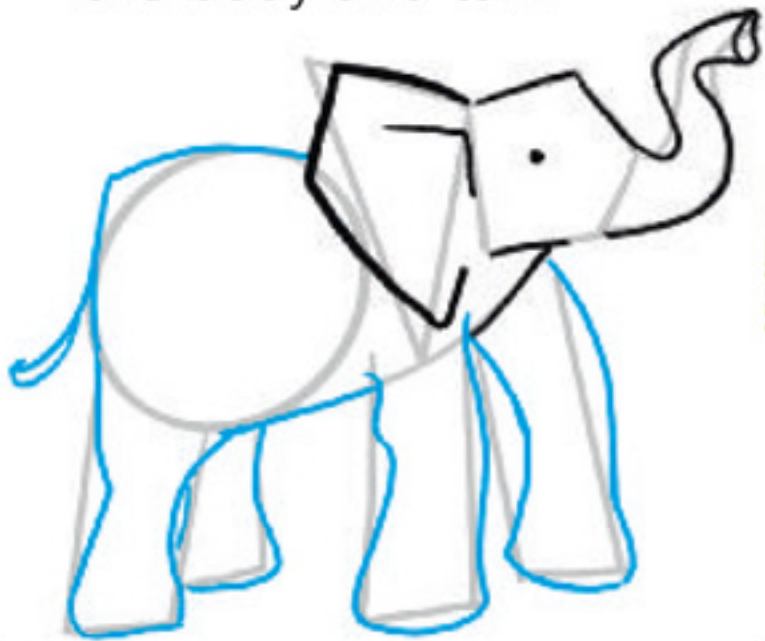
1 Start by drawing a big ear and a small eye.



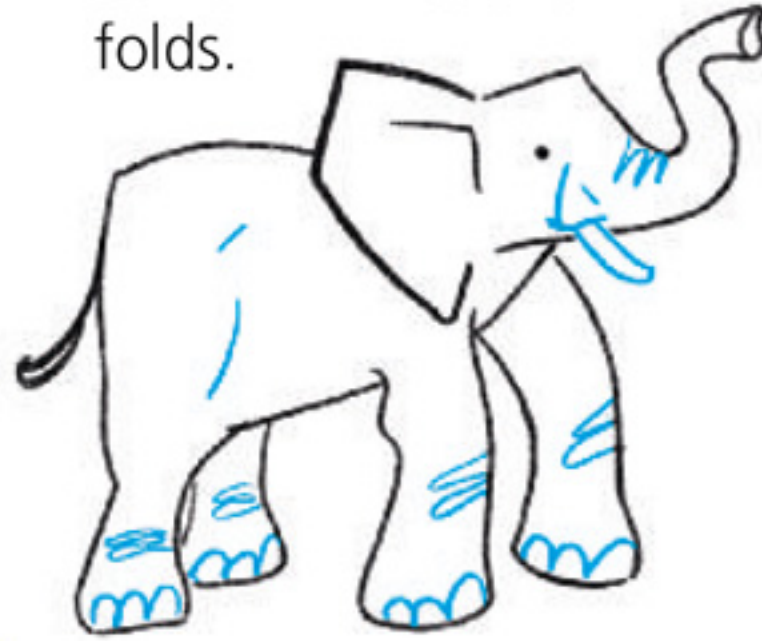
2 Then add the head and curvy trunk.



3 Draw strong, thick legs, the body and tail.



4 Finally, draw a tusk, and some wrinkles and folds.



Have a go at drawing an elephant here.

