



LoveReading4kids.co.uk
is a book website
created for parents and
children to make
choosing books easy
and fun

extracts from
Collection of Curiosities: Bugs

Written by
Vicky Egan

Published by
QED Publishing

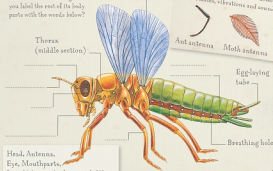
All Text is Copyright © of the Author and/or Illustrator

Please print off and read at your leisure.

LoveReading .co.uk

Insects up close

A insect has three body sections and six legs. Can you label the rest of its body parts with the words below?



Head, Antenna, Eye, Mouthparts, Leg, Abdomen (tail section), Wing

Answers on page 48

Antennae

Insects use their antennae to detect smells, tastes, vibrations and sounds.



Ant antenna Moth antenna

Legs

Some insect legs are designed for jumping. Others are better for running, swimming, digging or gathering pollen. Can you match these legs to the right insects?

Running

Pollen gathering

Digging

Swimming



Male cricket



Diving beetle



Cockroach



Honeybee

Answers on page 48

Bright colours

Lots of insects are brightly coloured. This can be to attract a mate or to warn predators that they are poisonous. Use your brightest pens to colour in these insects!



Darter



Answers on page 48

Mouthparts

The type of mouth an insect has depends on what food it eats. Can you match up these mouthparts with the right type of insect?



Spongy pad



Tube that uncoils



Jaws



Piercing tube



Mosquito



Rove beetle



Blow fly



Hummingbird hawkmoth

Answers on page 48

Insects that glow

Some bugs glow in the dark. Chemicals in their bodies produce light that attracts mates or prey, or warns attackers to stay away.

Firefly

Some male fireflies glow at dusk to attract a mate. Others do not glow.



Size up to 1.5 cm long
Range: Europe, Africa, Asia, Australia

Common glowworm

Size up to 1.5 cm long
Range: Europe, Africa, Asia, Australia



This female glowworm produces a yellow-green light on its abdomen at dusk. The light attracts males.

Fungus gnat larvae

Fungus gnat larvae nest in a mossy tube. The larvae's glowing tail attracts prey, which stick to sticky silk threads hanging from the tube.

Size up to 2 cm long
Range: worldwide



True or false?

- 1 Each species of firefly flashes its light in a different pattern.
- 2 Glowworms have been seen near the North Pole.
- 3 Fireflies can shut off their light when it's not needed.
- 4 In winter, glowworm larvae fold up like a coarctate and hibernates.
- 5 If a glowworm is hungry, its light shines brighter.



Answers on page 98

Railroad worm

If threatened, this beetle larva switches on bright head and body lights to warn the attacker to stay away.

Size up to 7 cm long
Range: North America, South America



Did you know?

The railroad worm also lights up when it's attacking prey. Its head glows a fiery red, its body shines greenish yellow and it kills with a poisonous bite!

Glimmering lights



Magical lights are twinkling at dusk, but who do they belong to? Join the dots to find out!